

MERCY HANDS FOR HUMANITARIAN AID
AND
MERCY HANDS EUROPE

SCHOOLS REHABILITATION ASSESSMENT MAY 2021



SUMMARY

Mahmoudyiah neighbourhood (in Arabic: المحمودية) located 40 km south of center of Baghdad known as "Gateway to Baghdad" is a rural area where very vulnerable communities live. It is estimated that approximately 350.000 inhabitants live there. It is a neighbourhood with very limited facilities and weak infrastructure. When it comes to schools, during the war conflict, the majority of the schools in this neighbourhood were destroyed and their remains are in a horrible shape and in a desperate need of rehabilitation. The lack of educational infrastructure means that school buildings are not of adequate quality, are unsafe or are uncondusive to learning and wellbeing.



The MH intervention in this location aims to rehabilitate the following schools

a) Al Mahmoudyia Commercial Secondary School for Girls

b) Al-Rafdeen primary school

c) King Ghazy secondary school

(These two schools, B and C are sharing the same building)

These schools receive no funding from the Ministry of Education. Based on MH's pre-assessment conducted the headmasters of the schools stated they have insufficient funds for conducting a much-needed rehabilitation work to ensure safety, hygiene standards and pedagogic norms.

In total, target beneficiaries of the intervention are:

a) Al Mahmoudyia Commercial Secondary School for Girls

261 girls aged 14-18 years

31 female teachers

1 headmaster

b) Al-Rafdeen primary school

245 boys + 130 girls = 375 aged 6-12 years

21 teachers (2 males, 19 females)

1 headmaster

c) King Ghazy secondary school

420 boys aged 12-18 years

20 teachers (8 males, 12 females)

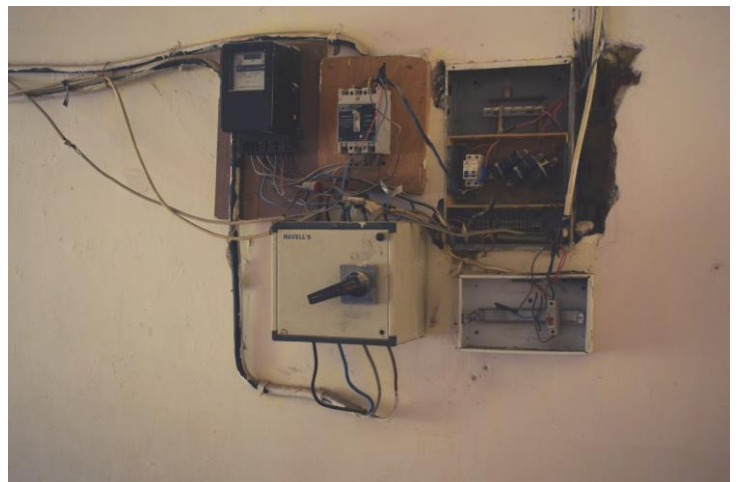
1 headmaster

It is important to mention that Iraqi National Education Cluster defined Mahmoudyiah neighbourhood as a priority location for educational interventions in Baghdad in 2021. Thus, Mercy Hands is committed to put efforts into rehabilitating the schools in this particular area.

AL MAHMOUDYIA COMMERCIAL SECONDARY SCHOOL FOR GIRLS

The main issues that endanger the life and wellbeing of the students of this school include:

- collapsing roof and ceiling
- dysfunctional sewage system
- damaged water system, including water pipes and water tanks
- lack of WASH facilities (basins in the bathrooms)
- lack of laptops and a printer (headmaster keeps the students' data in a handwritten paper form)
- damaged desks and chairs
- out of use electrical system (open cables are very dangerous)



AL-RAFDEEN PRIMARY SCHOOL AND KING GHAZY SECONDARY SCHOOL

The main issues that endanger the life and wellbeing of the students of this school area include:

- collapsing roof and ceiling
- dysfunctional sewage system
- damaged water system, including water pipes and water tanks
- damaged toilets, basins and outdoor water sink
- lack of whiteboards and school supplies
- damaged desks and chairs
- holes in outdoor area pavement
- out of use electrical system (open cables are very dangerous)



